

# APPLICATION AREAS:



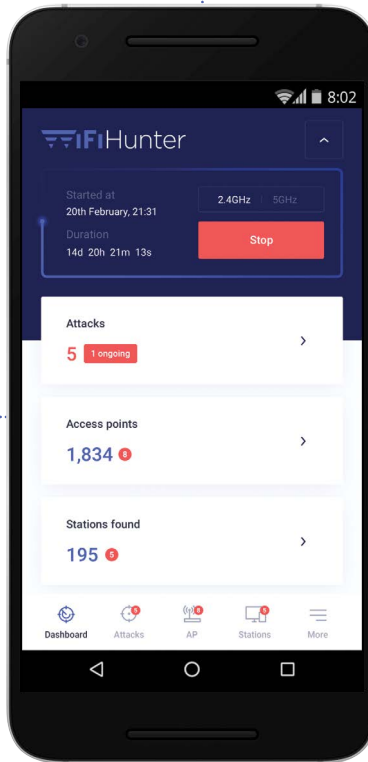
## ATTACKING CAPABILITIES

ALONG WITH GATHERING INTELLIGENCE ABOUT THE SURROUNDING WI-FI LANDSCAPE AND PROACTIVELY INVESTIGATING NETWORK TRAFFIC TO IDENTIFY THREATS, WI-FI HUNTER ALLOWS YOU TO STEP EVEN FURTHER. IT FEATURES A BUILT-IN MECHANISM FOR SELECTIVELY DE-AUTHENTICATING CLIENTS FROM THEIR ACCESS POINTS. THIS FUNCTIONALITY WORKS IN HARMONY WITH EXISTING MOBILE NETWORK MONITORING SETUPS AND OFFERS EFFORTLESS WI-FI JAMMING FOR THE SELECTED CLIENT.



## DIRECTIONAL FINDING

THE ADVANCED WI-FI HUNTER FEATURES INVOLVE THE ABILITY TO DETECT AND LOCATE NEARBY ACCESS POINTS AND WI-FI ENABLED DEVICES WITH PINPOINT ACCURACY.



## COMPREHENSIVE THREAT DETECTION

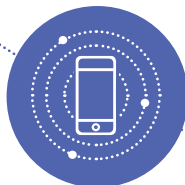
STAY AHEAD OF EVOLVING ATTACKS AND VULNERABILITIES. WI-FI HUNTER SCANS YOUR ENVIRONMENT AND ANALYSES ALL BYPASSING TRAFFIC TO PROACTIVELY DETECT ANY SUSPICIOUS BEHAVIOR. THE FUNCTIONALITY IS BENEFICIAL TO PRIVATE CLIENTS WHO ARE WILLING TO UNCOVER

THREATS IN WI-FI NETWORKS, AS WELL AS GOVERNMENTAL ORGANIZATIONS THAT ACTION AGAINST ILLEGAL USAGE OF WI-FI MONITORING SYSTEMS. THE DETECTED ATTACKS INCLUDE KRACK ATTACK, DE-AUTHENTICATION ATTACK, WPS BRUTE-FORCE ATTACK AND PASSWORD BRUTE-FORCING FOR ANY ACCESS POINT.

## ADVANCED INTELLIGENCE GATHERING

WI-FI HUNTER SUPPORTS A RANGE OF FUNCTIONALITIES TO GATHER INTELLIGENCE ABOUT WI-FI NETWORKS IN THE ENCOMPASSING AREA.

ITS CAPABILITIES INCLUDE TRACKING ACTIVE WI-FI CLIENTS, DISPLAYING A LIST OF CLIENTS CONNECTED TO EACH ACCESS POINT, CAPTURING HALF AND FULL HANDSHAKES, COLLECTING PROBE REQUESTS AND PERFORMING TRAFFIC RECORDING, AMONG MANY OTHERS.



USA SALES & DISTRIBUTION

VT : L J 33

PHONE: 800-615-0392

MAIL: LML@COMSECLLC.COM



Wi-Fi Hunter

**GENERAL**

**WI-FI HUNTER IS AN ULTIMATE MULTI-PURPOSE SMARTPHONE-BASED DEVICE THAT GIVES YOU COMPLETE TRANSPARENCY AND CONTROL OVER SURROUNDING WI-FI NETWORKS. FROM ADVANCED THREAT DETECTION ALGORITHMS IN NEIGHBORING WI-FI NETWORKS TO DETAILED DATA GATHERING, IT IS DESIGNED TO REVEAL CRITICAL NETWORK INFORMATION ABOUT YOUR WI-FI LANDSCAPE IN AN INTUITIVE AND INFORMATIVE WAY.**

**USA SALES & DISTRIBUTION**

**COMSEC LLC**



**ADDRESS:**  
4525 South Boulevard, Suite 302  
Virginia Beach, VA 23452

**PHONE:**  
800-615-0392

**MAIL:**  
LML@COMSECLLC.COM



**FEATURES OVERVIEW**

- Fully passive scanning of Wi-Fi channels in 2.4 GHz and 5 GHz.
- Collecting essential information about access points and stations — including probe requests, half and full handshakes.
- Identifying a list of clients connected to each access point.
- Directional finding technology, allowing to precisely locate any active signal-transmitting Wi-Fi device.
- Real-time detection of common attack types, such as KRACK, WPS brute-force, de-authentication, and basic brute-forcing attack.
- The built-in de-authentication mechanism, allowing to de-authenticate selected clients from Wi-Fi networks.
- Traffic recording in the.pcap file for the access point or station.
- Determining MAC address randomization.
- Disclosing hidden networks.

**TECHNICAL CHARACTERISTICS**

<b>Frequency range</b>	2.4 GHz: Channels 1–14 (2402 MHz – 2494 MHz) 5 GHz: Channels 34–165 (5150 MHz – 5835 MHz)
<b>Battery life</b>	Up to 12 hours in scanning mode

**APPLICATION AREAS**

**FEATURES OVERVIEW**

**TECHNICAL CHARACTERISTICS**

# WI-FI HUNTER®

**POWERFUL WI-FI ANALYZING CAPABILITIES  
INTEGRATED INTO A COMPACT  
SMARTPHONE-BASED SOLUTION**